

Pressure Gauge

standard

dim 80 mm

E 02.01.05

ed.17.01

Design	Standard pressure gauge. Suitable for media that will not obstruct the pressure system or attack copper alloy parts
Design	EN 837-1
Type	Serie 2040
WIKA type no	111.10 lower mount 111.12 back mount
Case diameter	Dim 80 mm
Accuracy	Class 2,5%
Case	Black plastic case
Window	Plastic, snap-fit
Pressure element	Copper alloy
Pressure unit	Bar. Option also bar/Pascal, psi or bar/psi
Scale	White plastic scale
Pressure connection	G3/8" or G1/2" male lower mount G1/4" back mount
Mounting	Lower or back mount, also with back flange, front flange or triangular bezel with clamp
Pressure limitation	75% of full scale value by steady pressure 66% of full scale value by fluctuating pressure By short time pressure full scale value
Permissible temperature	Medium temperature max -20 till +60°C Ambient temperature max -20 till +60° C
Production options	Accuracy 1,6% Other pressure connections



2040
Lower mount



2041
Back mount



2045
Lower mount
back flange



2047
Back mount
front flange



2048
Back mount
bezel and clamp

Pressure Gauge

standard

dim 80 mm

E 02.01.05

Pressure range	Interval	Divisions
0-0,6 bar	0,02	30
0-1 bar	0,05	20
0-1,6 bar	0,05	32
0-2,5 bar	0,1	25
0-4 bar	0,2	20
0-6 bar	0,2	30
0-10 bar	0,5	20
0-16 bar	0,5	32
0-25 bar	1,0	25
0-40 bar	2,0	20

Pressure range	Interval	Divisions
0-60 bar	2,0	30
0-100 bar	5,0	20
0-160 bar	5,0	32
0-250 bar	10,0	25
0-400 bar	20,0	20
-1/0 bar	0,05	20
-1/+1,5 bar	0,1	25
-1/+3 bar	0,2	20
-1/+5 bar	0,2	30
-1/+9 bar	0,5	20

Accuracy

Max permissible error 2,5%

The accuracy is expressed as a percentage of full scale range. Permissible error 2,5% will cover 0% till 100% of scale range with a reference temperature of +20°C.

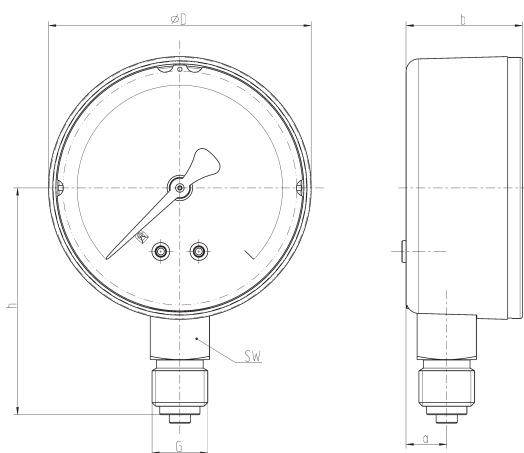
Ex. Pressure range 0-10 bar has an error of $\pm 0,25$ bar

Temperature effect

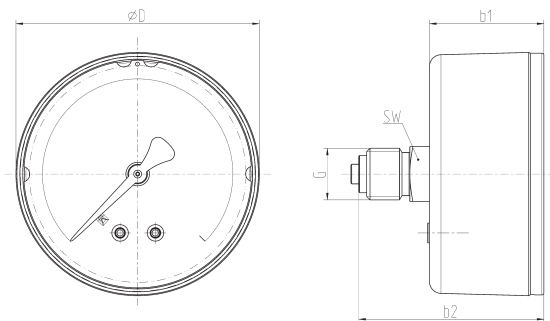
Temperature effect

Temperature of the measuring system over or under the reference temperature +20°C will effect the accuracy with 0,4 percentage per +10°C. With a medium temperature of +40°C the accuracy will be $\pm 3,3\%$.

Lower mount type 2040



Back mount type 2041



Dim	a	b	b ₁	b ₂	D	G	h	SW	Weight
80	11,5	30	32	49	79	G3/8"	72	22	0,18 kg

Pressure Gauge

standard

dim 80 mm

E 02.01.05

Code no for stock items							
Dim	Conn	Unit	Lower	Back	Back flnaga	Front flange	Clamp
80	G1/4"	bar	-	204128	-	204728	204828
	G3/8"	bar	204030	-	204530	-	-
	G1/2"	bar	204035	-	-	-	-

Additional code for pressure range

Range		Range		Range		Range		Range	
0-0,6 bar	01	0-4 bar	06	0-25 bar	13	0-160 bar	20	-1/1,5 bar	66
0-1 bar	02	0-6 bar	07	0-40 bar	15	0-250 bar	22	-1/3 bar	67
0-1,6 bar	03	0-10 bar	08	0-60 bar	17	0-400 bar	24	-1/5 bar	68
0-2,5 bar	04	0-16 bar	11	0-100 bar	19	-1/0 bar	40	-1/9 bar	67

Exemple

Code table for nominal size 80 mm, pressure connection G3/8", lower mount = 204030

Additional code for pressure range 0-10 bar = 08

Complete ordering number = 20403008